



# Service Bulletin 011 – 7253

**Con/Rig Tool Kit 010-0689**

Status:  
**Advisory\***

## ISSUE DATE

June 9, 2009

## AFFECTED PRODUCTS

Conan & Rigmaster Tool Kit 010-0689, Revision D or older

## AFFECTED COMPONENT

Wrist Clamp Tool 010-1117

## SERVICE INFORMATION

The Conan/Rigmaster Tool Kit 010-0689, revision D or older, contains only one Wrist Clamp Tool 010-1117 (see figure 1). The correct quantity is 2. The additional part will be supplied at no cost.

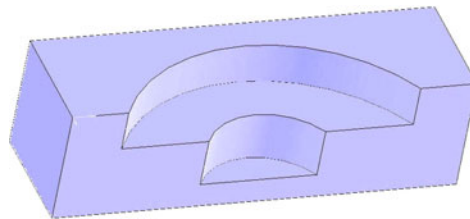


Figure 1 – 010-1117 Wrist Clamp Tool, 1 of 2

## FIELD ACTION

- Part A – Inspect 010-0689 Tool Kit for revision.
- Part B – Contact Schilling Robotics.
- Part C – Update affected part list.

*BULLETIN STATUS LEVELS	
<b>MANDATORY</b>	Field action is <b>MANDATORY</b> to ensure personnel safety, equipment functionality, and/or continuation of warranty coverage.
<b>RECOMMENDED</b>	Field action is not required but is highly <b>RECOMMENDED</b> and will result in significantly increased levels of personnel safety and/or equipment functionality.
<b>ADVISORY</b>	Bulletin contains advisory information to assist the owner/operator in more effective operation or service of the product. Compliance is not rated.
<p>If you have any questions about this service bulletin, contact the Schilling Customer Service Department at:            Tel: +1 530 753 6718 (USA) or +44 (0) 1224 560 900 (UK)            Fax: +1 530-753-1534 (USA) or +44 (0) 1224 560 901 (UK)            e-mail: <a href="mailto:service.schilling@schilling.com">service.schilling@schilling.com</a> • Web site: <a href="http://www.schilling.com">http://www.schilling.com</a></p>	

## **Part A – Determine Revision of Con/Rig Tool Kit 010-0689**

Inspect each Tool Kit 010-0689 and determine its revision. If the Tool Kit is **Revision D** or older, one additional Wrist Clamp Tool 010-1117 will be needed. Continue to **Part B**.

**NOTE: Revision E** or newer kits are supplied with both clamp halves, and no upgrade is necessary.

## **Part B – Contact Schilling Robotics**

Please contact Schilling Robotics at [customerservicebulletins@schilling.com](mailto:customerservicebulletins@schilling.com) to request an additional 010-1117 Wrist Clamp Tool. Continue to **Part C**.

## **Part C – Update affected part**

Replace 010-0689 Part List as needed.

**TOOL KIT,CON/RIG, 010-0689**

**Rev.E**

<b>Item</b>	<b>P/N</b>	<b>Description</b>	<b>Qty</b>
1	010-0099	SKT,MOD,7/16,6PT.,1/4 DRIVE(SN	1
2	010-0173	TOOL,CLP,JAW	1
3	010-0174	TOOL,INSTALL,M,2.25	1
4	010-0175	TOOL,SIZING,F,2.25	1
5	010-0184	TOOL,INSTL,M,1.75	1
6	010-0185	TOOL,SIZING,F,1.75	1
7	010-0203	TOOL,SIZING,M,1.0	1
8	010-0804	TOOL,PISTON ROD,JAW	1
9	010-0237	TOOL,RESIZING	1
10	010-0238	CLR,JAW PSTN	1
11	010-0759	CROWSFOOT,OPEN END,1 5/8	1
12	010-0525	TOOL,SEALINSTL	1
13	010-0480	NUT,CLPING,WR,PIN	0
14	010-0760	CROWSFOOT,OPEN END,1 1/4~	1
15	010-0991	TOOL,CONAN JAW BOLT	1
16	010-1117	WRIST CLAMP TOOL	2
17	010-1202	TOOL,CONAN,RELIEF VALVE	1
18	010-0239	TOOL,BRGINSTL	1
19	010-0240	TOOL,JAW ROD SL	1

This page not used.