

This rugged, high-powered, hydraulic pan & tilt unit is based on the proven and reliable wrist actuator used on Schilling Robotics' CONAN, ORION, and RIGMASTER manipulators.

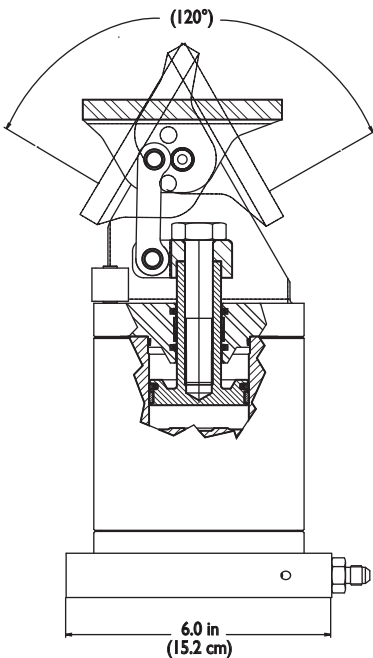
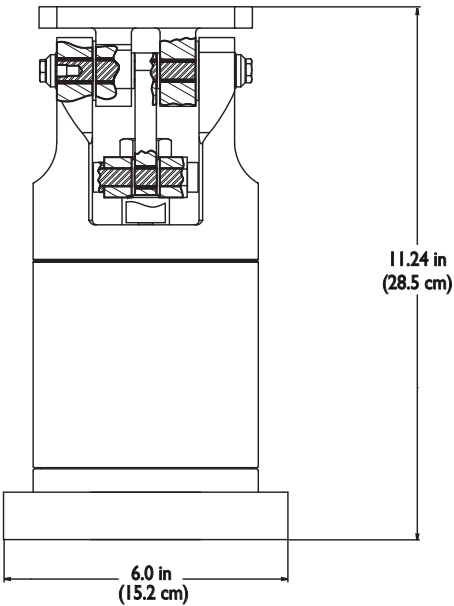
- High reliability
- Very easy maintenance
- Powerful and rugged
- High output-to-weight ratio
- Aluminum and stainless steel construction
- High output torque

The robust design, high-torque output, and hard-anodized aluminum construction of the pan & tilt unit make it well suited to demanding subsea environments. The pan & tilt unit provides full 360-degree rotation and tilt of +/- 60 degrees. Function movement can be controlled with a solenoid-actuated or servo-actuated control manifold.

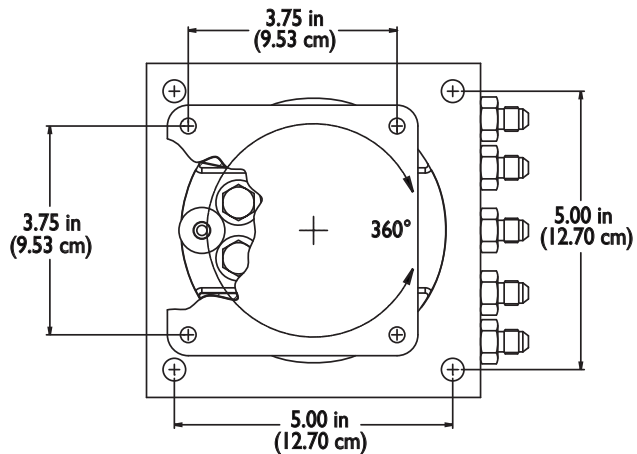


PAN & TILT SPECIFICATIONS

Height	28.5 cm (11.24 in.)
Length	15.2 cm (6.0 in.)
Width	15.2 cm (6.0 in.)
Weight in air	11.3 kg (25 lb)
Weight in seawater	8.1 kg (17.8 lb)
Range of motion	360 degree pan(+/- 180 degrees), 120 degree tilt
Speed	180 degree/sec (30 rpm)
Depth rating	6,000 m (19,686 ft)
Supply pressure	1500 psi minimum to 3000 psi nominal (103 to 207 bar)
Return pressure, maximum	350 psi (24.11 bar)
Fluid type	Common petroleum-based, glycol, and environmentally safe hydraulic fluids
Recommended filtration	10 microns (25 microns absolute)

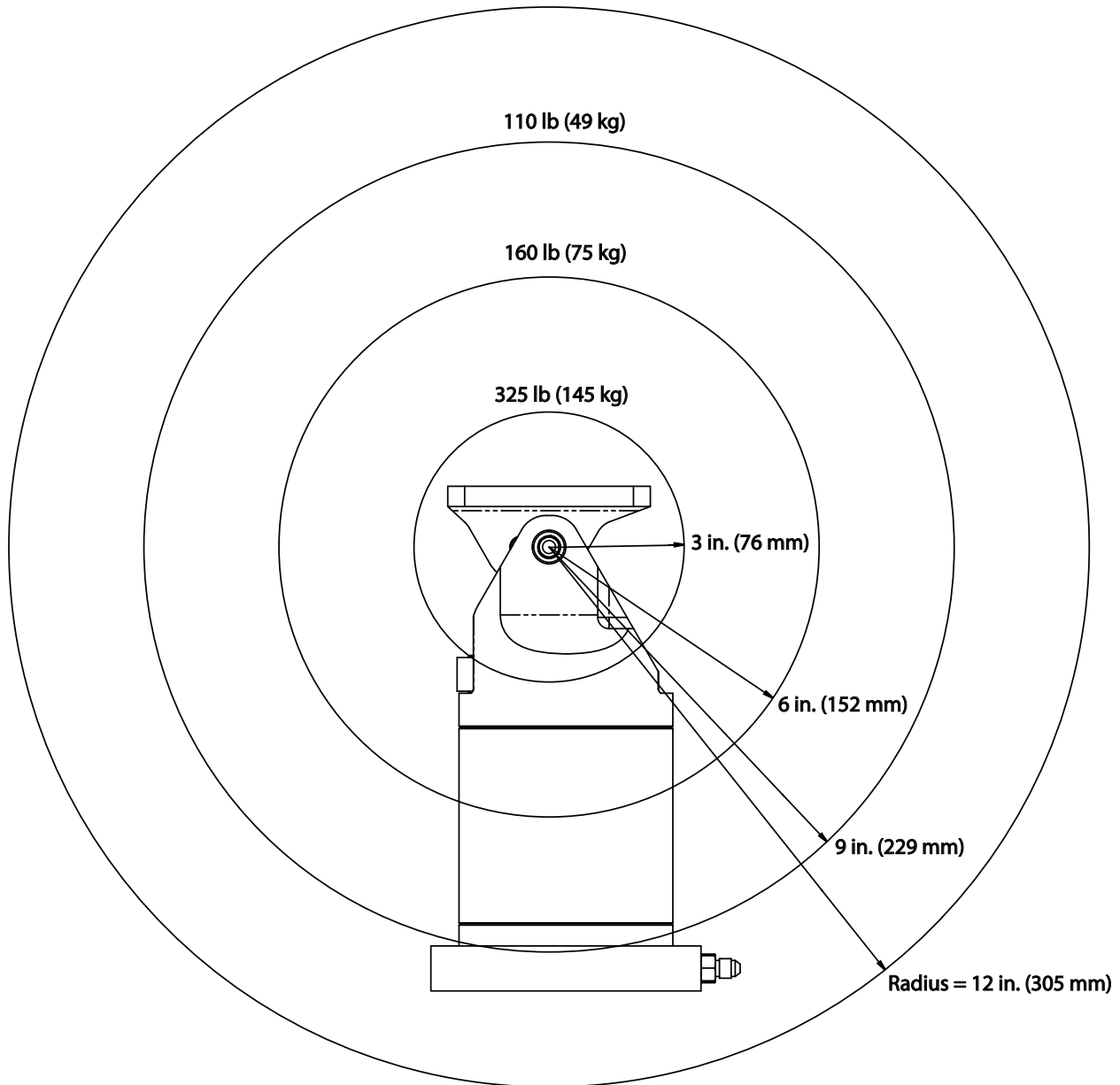


PAN & TILT DIMENSIONS



LOAD RATINGS

Max load = 80 lb (36 kg)



Object's center of gravity must be within ring to support corresponding load.

SO DEEP, NO ONE COMES REMOTELY CLOSE

SCHILLING
ROBOTICS



WWW.SCHILLING.COM
SALES @ SCHILLING.COM

Headquarters

SCHILLING ROBOTICS, LLC

201 Cousteau Place
Davis, California
95618-5412 U.S.A.

Tel. +1-530-753-6718
Fax +1-530-753-8092

Gulf of Mexico Regional Office

SCHILLING ROBOTICS, LLC

7102 W. Sam Houston Parkway N.
Suite 100
Houston, Texas
77040-3164 U.S.A.

Tel. +1-281-598-4100
Fax +1-281-598-4130

North Sea Regional Office

SCHILLING ROBOTICS LTD

Unit N, Nord Centre
Aberdeen
AB11 5DN U.K.

Tel. +44 (0) 1224 560 900
Fax +44 (0) 1224 560 901